

ArchiCAD 7.0

Architecture out of the box

**ArchiCAD 7.0 Update:
CAD for Principals**



ArchiCAD 7.0

Architecture out of the box

Key features of ArchiCAD 7.0

- ò ProjectXChange:
 - ò Internet-enabled workflow management
- ò Design tools
 - ò Extensive implementation of parametric object technology for greater design flexibility and ease of use
- ò Construction Documentation tools
 - ò Intelligent automation of project automation

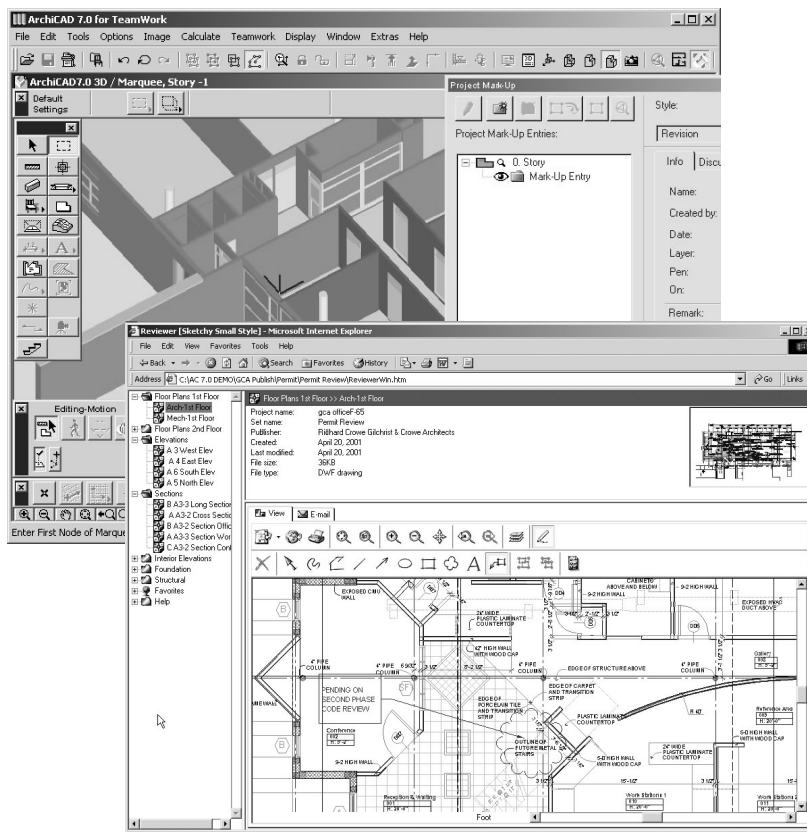


ArchiCAD 7.0

Architecture out of the box

ProjectXChange in ArchiCAD 7.0

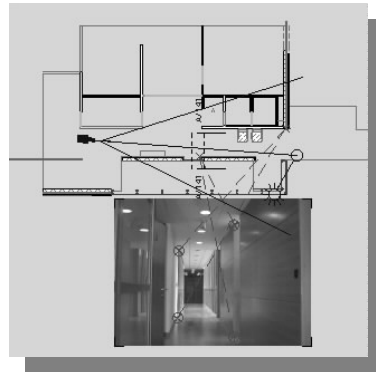
- ò Helps architects manage the flow of design information through the distribution, review, revision and approval process
- ò One-click publishing of custom sets of project information for clients, contractors, review boards, engineers, etc.
- ò Enables review & input from non-CAD users through browser plug-in
- ò Project team revision communication and control



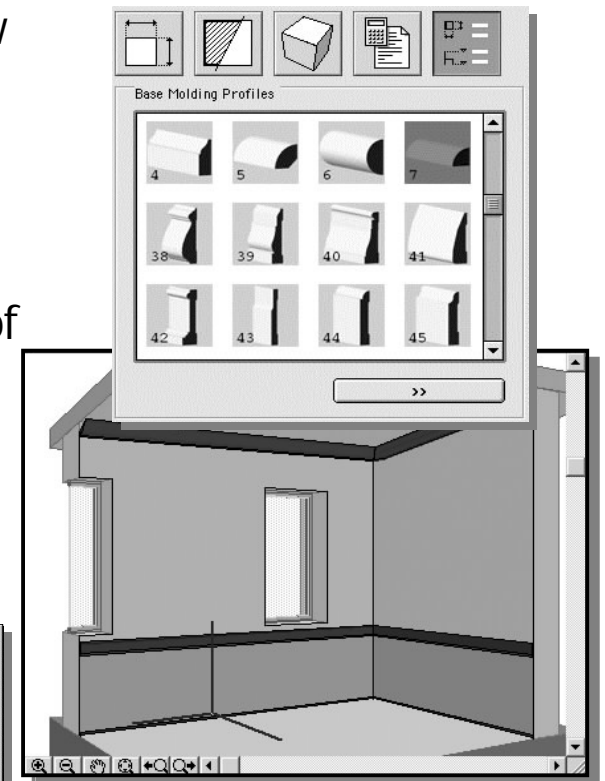
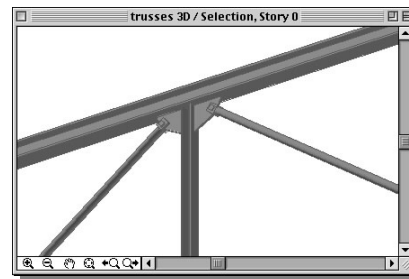
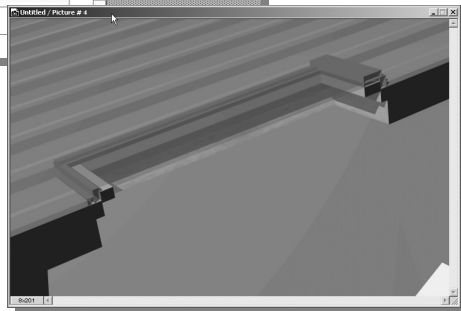
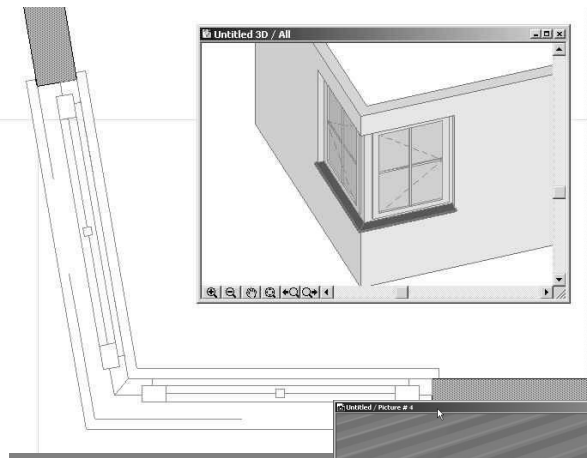
ArchiCAD 7.0

Architecture out of the box

Design Tools



- ò Corner Window
- ò Skylight Tool
- ò Trussmaker
- ò Room, slab, roof accessories
- ò Align View



ArchiCAD 7.0

Architecture out of the box

Construction Documentation Tools

- ò Interior Elevations
- ò Interactive Door/Window Schedule
- ò OLE in Plotmaker
- ò Construction Simulation
- ò Drag & drop content from
Manufacturer's website
- ò Grid tool
- ò Favorites

